

# Ein ganz normaler Tag...

*Eclipse und Ich*

# Agenda

- ▶ **Motivation**
- ▶ **08:32 Uhr – Los geht's...**
- ▶ **08:47 Uhr – Einstieg in die tägliche Arbeit**
- ▶ **08:48 Uhr – „Support“**
- ▶ **09:30 Uhr – Standup Meeting**
- ▶ **10:12 Uhr – „Bugfixing“**
- ▶ **15:38 Uhr – „Bug-“patching““**

# Motivation

- ▶ „heterogener“ Projektalltag
- ▶ „homogene“ Arbeitsweise
- ▶ neue „alte“ Eclipse Features ( $\leq 3.4$ )

+	=	positiv
(+)	=	eingeschränkt positiv
(=)	=	neutral
(-)	=	eingeschränkt negativ
-	=	negativ

- ▶ „best“ practices

# „heterogener“ Projektalltag – Ist-Zustand

## ▶ 80 < Projekte im Workspace

Client / Server

Build / Installer

QS / Doku

## ▶ OS übergreifende Entwicklung → 2 trunk-workspaces

## ▶ parallele Aufgaben

(Weiter-)Entwicklung      ≈ 80%

Bugfixing                      ≈ 10%

Support (Branches)         ≈ 10% - selten planbar

8:32 Uhr - Los geht's...

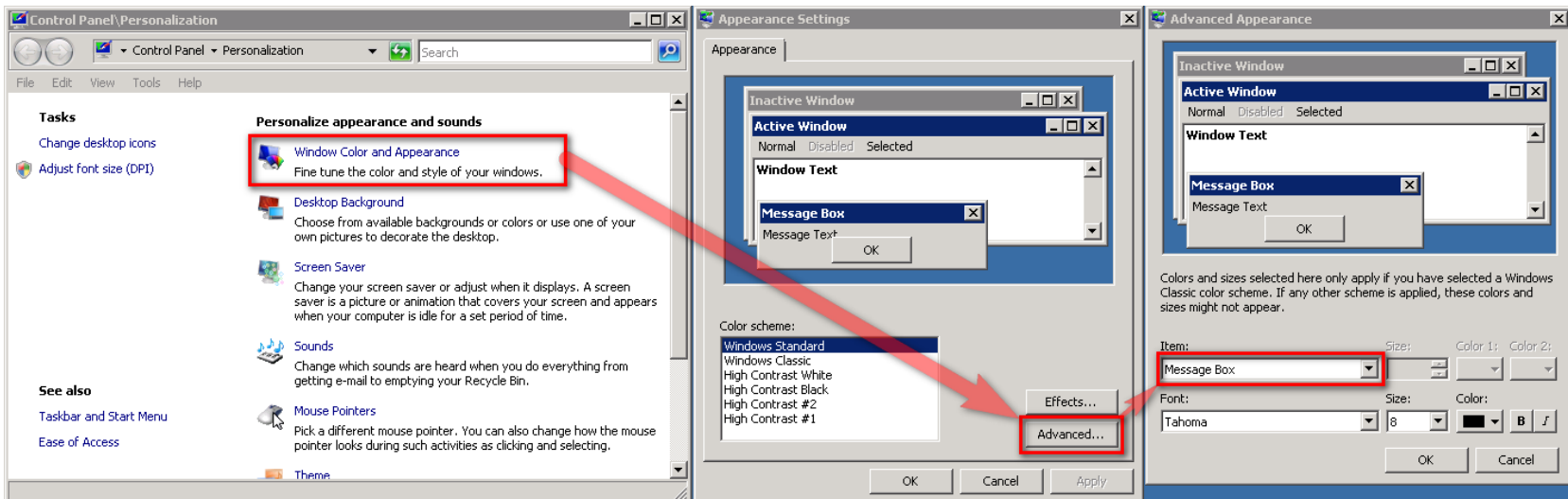
- ▶ **IDEs starten**  
Eclipse 3.4.1
- ▶ **obligatorischer Kaffee**
- ▶ **kurzer Blick in die nächtlichen Regressionstests**
  
- ▶ **DEMO**
- ▶ **(Support-) Emails lesen**

# Eclipse "Baum"-Schriften Vortrags tauglich

► Desktop → rechte Maustaste → Personalize → Window Color and Appearance → Advanced...

"Baum"-Schriften - Item: Message Box (default 9)

"Menu"-Schriften - Item: Menu (default 8)



## (Window) Working Set(s)

- ▶ **Gruppieren / Filtern von Workspace Projekten**  
Top Level Elements: projects / working sets
- ▶ **Package Explorer / Project Explorer / ...**
- ▶ **global: Window Working Set**
- ▶ **+ Übersichtlichkeit / (+) Performance**
- ▶ **(-) Verwaltung**

`<workspace>/metadata/.plugins/org.eclipse.ui.workbench/workingsets.xml`

# Linked (external) Resources

- ▶ Einbinden / Verlinken externer Dateien / Ordner
- ▶ (-) Performance / + Übersichtlichkeit / + Konsistenz

- ▶ + EFS / Eclipse Tooling

Editoren

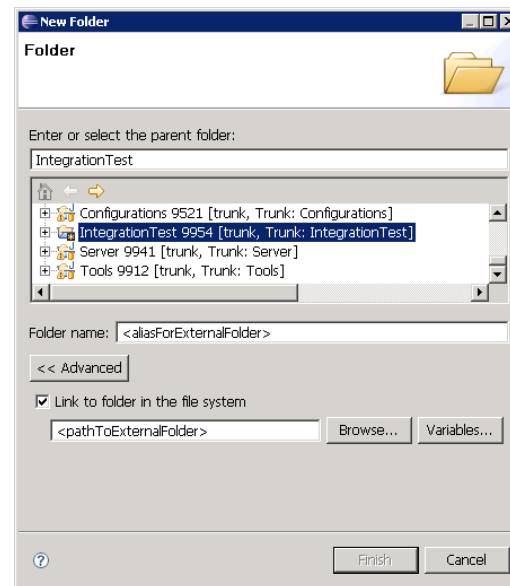
Search&Replace

D&D, Undo&Redo ...

- ▶ (+) Verwaltung

+ .project → Versionsverwaltung

(-) default absolute Pfade (Variablen möglich) → OS spezifisch



## 8:46 – Wo bin ich? Was liegt heute an?

### ▶ **Entwicklung**

Welche (Teil-) Aufgabe bearbeite ich zur Zeit?  
Welche Klassen und Ressourcen gehören dazu?

### ▶ **DEMO**

## Mylyn – (lokale) Tasks

- ▶ **Eclipse “Task List” View**
- ▶ **Einfache Organisation eigener (Teil-) Aufgaben**
  - (=) Planung von Zeitpunkt + Dauer
  - (=) Suchen / Filtern
- ▶ **+ Verbindet fachliche Aufgabe & technischen Focus**
- ▶ **Verwaltung**
  - (=) Im-+ Export ins Dateisystem

## 8:47 – Support Anfrage

- ▶ **Eingehende Support-Email**

  - Frage zu einer "Action"

  - Hinweis auf fehlerhafte Implementierung

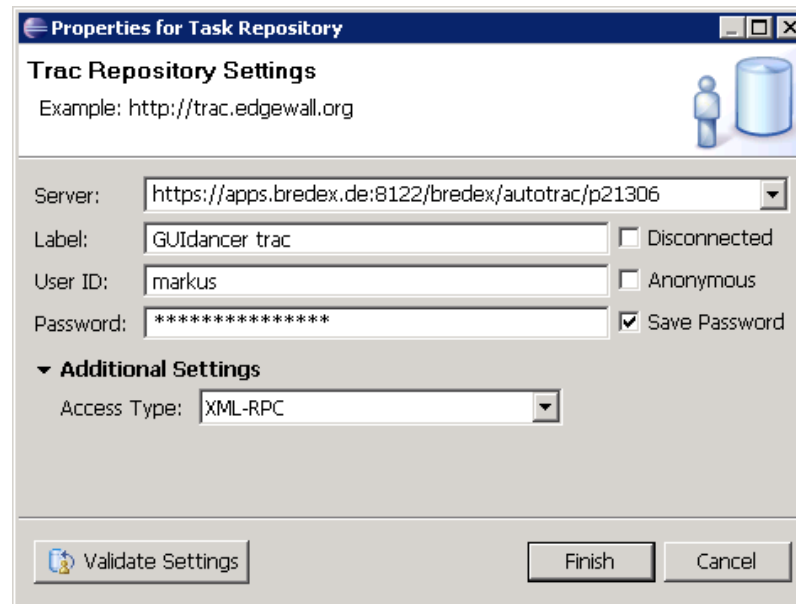
- ▶ **Ticketerstellung**

- ▶ **DEMO**

# Mylyn – Konfiguration Task Repository

- ▶ **Task Repositories View**
- ▶ **Anbindung an div. bug-tracking Systeme**

Bugzilla Connector  
Trac Connector



The screenshot shows a dialog box titled "Properties for Task Repository" with a sub-header "Trac Repository Settings". Below the sub-header is an example URL: "Example: http://trac.edgewall.org". The dialog contains several input fields and checkboxes:

- Server:
- Label:   Disconnected
- User ID:   Anonymous
- Password:   Save Password
- Additional Settings:

At the bottom of the dialog, there are three buttons: "Validate Settings", "Finish", and "Cancel".

## Mylyn – (shared) Task

- ▶ **+ zentrale Verwaltung von Tasks / Tickets**

Einfacher Zugriff auf trac-Tickets

trac-Attribute + -Workflow werden beachtet

Attachments (Screenshots) + Context

- ▶ **+ (lokales) Save + Submit**

- ▶ **+ eigene Abfragen**

automatische Benachrichtigung / Refresh

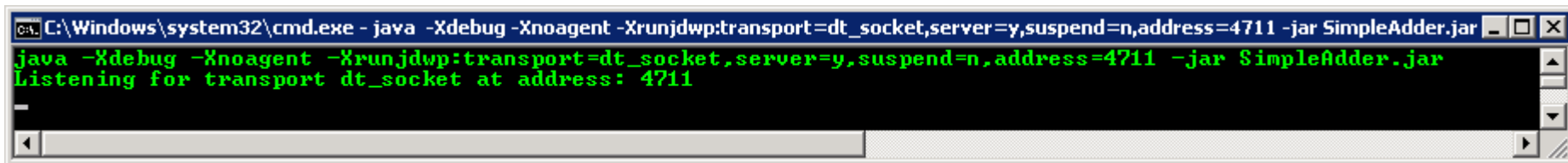
## 9:30 – Standup Meeting

- ▶ **Besprechung aktueller Themen**  
Support Anfrage
- ▶ **Entscheidung: Fixen wir "sofort"**
  
- ▶ **10:12 – Bugfixing**

# Remote Debugging (1/2)

- ▶ Debugging entfernter Anwendungen
- ▶ javac debug=on
- ▶ (-) JVM abhängig – non standard JVM parameter

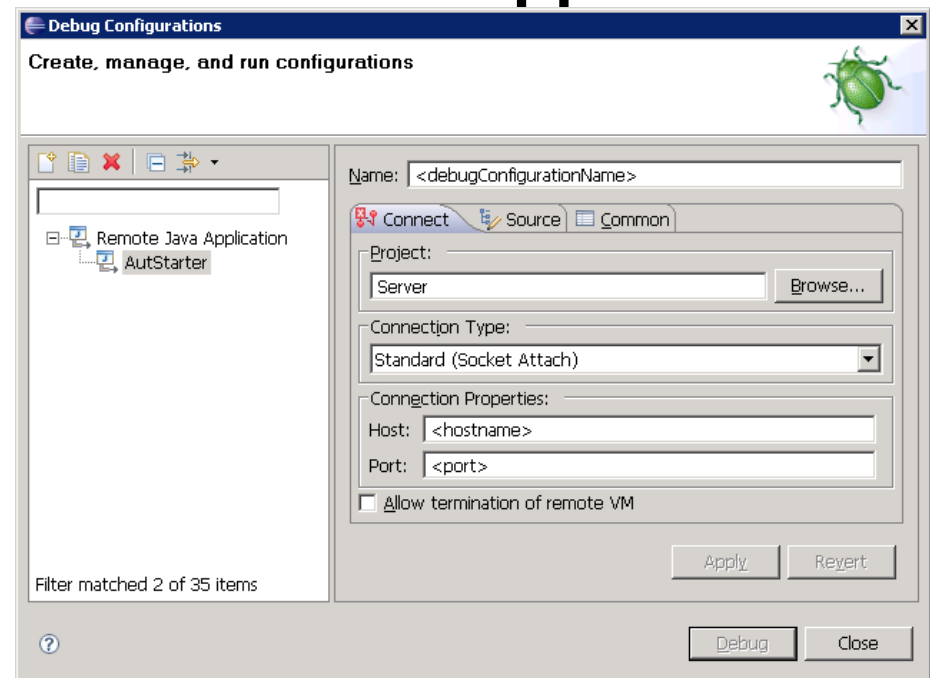
-Xdebug -Xrunjdw:transport=dt\_socket,server=y,suspend=n,address=<port>  
*suspend=y* → JVM starts in suspended mode and stays suspended until a debugger is attached to it



```
C:\Windows\system32\cmd.exe - java -Xdebug -Xnoagent -Xrunjdw:transport=dt_socket,server=y,suspend=n,address=4711 -jar SimpleAdder.jar
java -Xdebug -Xnoagent -Xrunjdw:transport=dt_socket,server=y,suspend=n,address=4711 -jar SimpleAdder.jar
Listening for transport dt_socket at address: 4711
```

# Remote Debugging (2/2)

- ▶ Eclipse Remote Debugging
- ▶ Debug Configurations → Remote Java Application
- ▶ + „normales Debuggen“



# Ticket – “fixed”

## ▶ Attach / Retrieve Context(s)

“Bugfixing”-Kontext am Ticket hinterlegen

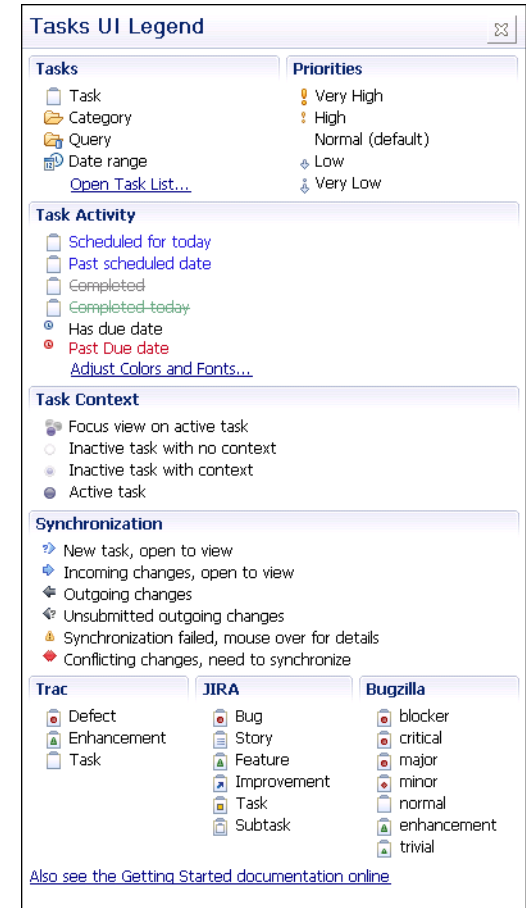
Kontext: Klassen + Methoden + Ressourcen

## + Teamwork

## ▶ rich trac-Verlinkung

changeset:4711 → verlinked Ticket mit Commit

Ticket #4711 → verlinked Commit mit Ticked



**Tasks UI Legend**

- Tasks**
  - Task
  - Category
  - Query
  - Date range
  - Open Task List...
- Priorities**
  - Very High
  - High
  - Normal (default)
  - Low
  - Very Low
- Task Activity**
  - Scheduled for today
  - Past scheduled date
  - Completed
  - Completed-today
  - Has due date
  - Past Due date
  - Adjust Colors and Fonts...
- Task Context**
  - Focus view on active task
  - Inactive task with no context
  - Inactive task with context
  - Active task
- Synchronization**
  - New task, open to view
  - Incoming changes, open to view
  - Outgoing changes
  - Unsubmitted outgoing changes
  - Synchronization failed, mouse over for details
  - Conflicting changes, need to synchronize
- Trac**
  - Defect
  - Enhancement
  - Task
- JIRA**
  - Bug
  - Story
  - Feature
  - Improvement
  - Task
  - Subtask
- Bugzilla**
  - blocker
  - critical
  - major
  - minor
  - normal
  - enhancement
  - trivial

[Also see the Getting Started documentation online.](#)

## 15:38 – Rücksprache mit AB

- ▶ **Bugfix auch im Branch vornehmen**

## Team (1/2)

### ▶ Team → Create Patch

**nicht** „commit“-ete lokale Änderungen

auf verschiedenen Ebenen möglich: File, Folder, Project, Workspace

### ▶ History → Create Patch

„commit“-ete Änderungen als Revisions im Versioning System (SVN)

auf verschiedenen Ebenen möglich: File, Folder, Project, Workspace

beliebiger Zeitpunkt: trunk, branch, tags

### ▶ Clipboard, Filesystem, current workspace

## Team (2/2)

- ▶ **Branch Workspace öffnen**

- ▶ **Team → Apply Patch**

Aktuell selektierte Resource wird ge-“patched“ (verschiedene Ebenen)

Clipboard, Filesystem, current workspace (\*.patch)

- ▶ **Team → Commit**

Bugfix auch auf dem Branch verfügbar

- ▶ **+ mächtig / (+) unkompliziert**

## 20:00 – Ende Stammtisch Vortrag

- ▶ **Fragen?**
- ▶ **Anmerkungen?**
- ▶ **Eigene Erfahrungen?**
  
- ▶ **<http://blog.bredex.de>**